

The ABCs of Early Childhood Education: A Comprehensive Guide for Teachers

If you are a early childhood teacher, you likely already know everything that I am about to say

By Matthew Lynch



Table Of Contents

Chapter 1: The Importance of Early Childhood Education	4
The Benefits of Early Childhood Education	5
The Role of Teachers in Early Childhood Education	6
The Impact of Early Childhood Education on Development	8
Chapter 2: Understanding Child Development	11
The Stages of Child Development	12
Factors Affecting Child Development	14
Promoting Healthy Development in Early Childhood	15
Chapter 3: Creating a Positive Learning Environment	18
Setting Up the Classroom	19
Establishing Rules and Routines	21

Incorporating Play-Based Learning	23
Chapter 4: Curriculum and Lesson Planning	25
Designing an Effective Curriculum	26
Planning Engaging Lessons	27
Differentiated Instruction in Early Childhood Education	30
Chapter 5: Assessing and Monitoring Student Progress	33
Methods of Assessment in Early Childhood Education	34
Tracking Student Development	35
Using Assessment Data to Inform Instruction	37
Chapter 6: Working with Families and Communities	40
Building Relationships with Families	41
Engaging Families in the Learning Process	43
Collaborating with Community Resources	44
Chapter 7: Supporting Children with Diverse Needs	46
Inclusive Practices in Early Childhood Education	47
Differentiating Instruction for Diverse Learners	48
Addressing Behavioral Challenges in the Classroom	51

Chapter 8: Professional Development and Self-Care	53
Continuing Education Opportunities for Early Childhood Educators	54
Taking Care of Yourself as a Teacher	55
Balancing Work and Personal Life	57
Chapter 9: Advocacy and Policy in Early Childhood Education	60
Advocating for Quality Early Childhood Education	61
Understanding Policies Affecting Early Childhood Education	63
Promoting Positive Change in the Field of Early Childhood Education	65
Chapter 10: Conclusion and Resources	68
Reflecting on Your Practice as an Early Childhood Educator	69
Additional Resources for Teachers in Early Childhood Education	71



01

Chapter 1: The Importance of Early Childhood Education

The Benefits of Early Childhood Education

Early childhood education plays a crucial role in laying the foundation for a child's future academic success and overall development. As teachers in the field of early childhood education, it is important to understand the numerous benefits that come with providing young children with quality educational experiences from a young age.

One of the key benefits of early childhood education is the development of important cognitive skills. Research has shown that children who participate in quality early childhood education programs are more likely to develop strong language, literacy, and math skills. These foundational skills are essential for academic success in later years and can set children on a path towards lifelong learning.

In addition to cognitive development, early childhood education also plays a significant role in social and emotional development. By providing young children with opportunities to interact with their peers and learn how to regulate their emotions, early childhood education helps children develop important social skills such as empathy, cooperation, and conflict resolution. These skills are essential for building positive relationships with others and navigating social situations effectively.

Furthermore, early childhood education can also have long-term benefits for children's physical health. Quality early childhood education programs often incorporate physical activity and healthy eating habits, which can help children develop lifelong habits that promote overall health and well-being. By instilling healthy habits from a young age, early childhood education can help prevent chronic health issues such as obesity and diabetes in later years.

Overall, early childhood education is a powerful tool for ensuring that all children have access to the resources they need to succeed in school and beyond. As teachers in the field of early childhood education, it is our responsibility to advocate for the importance of early childhood education and work towards providing all children with high-quality educational experiences that set them up for success in the future. By recognizing and promoting the benefits of early childhood education, we can help create a more equitable and prosperous society for all.

The Role of Teachers in Early Childhood Education

In early childhood education, teachers play a crucial role in shaping the development of young children. They are not just educators, but also nurturers, caregivers, and role models. The relationship between a teacher and a child in these formative years can have a lasting impact on the child's academic and social success in the future. Teachers in early childhood education must possess a unique set of skills and qualities to effectively support the growth and development of their students.

First and foremost, teachers in early childhood education must have a deep understanding of child development. They must be knowledgeable about the physical, cognitive, social, and emotional milestones that children typically reach at each age. This knowledge allows teachers to create developmentally appropriate lesson plans and activities that meet the individual needs of each child in their care. By understanding the unique abilities and challenges of each child, teachers can tailor their teaching strategies to support each child's growth and development.

In addition to understanding child development, teachers in early childhood education must also have strong interpersonal skills. Building positive relationships with young children is essential for creating a safe and nurturing learning environment. Teachers must be patient, compassionate, and empathetic, as they guide their students through the ups and downs of early childhood. By fostering strong relationships with their students, teachers can create a sense of trust and security that allows children to thrive academically and emotionally.

Teachers in early childhood education also serve as advocates for their students. They must be able to identify and address any barriers to learning that their students may face, whether it be a learning disability, language barrier, or social-emotional issue. Teachers must work closely with parents, administrators, and other professionals to ensure that each child receives the support they need to succeed. By advocating for their students, teachers can help break down barriers to learning and create a more inclusive and equitable educational environment.



Overall, the role of teachers in early childhood education is multifaceted and essential. They not only provide children with the academic knowledge they need to succeed in school, but also help them develop the social and emotional skills they need to navigate the world around them. By understanding child development, building positive relationships, and advocating for their students, teachers in early childhood education can make a lasting impact on the lives of young children and set them on a path to success.

The Impact of Early Childhood Education on Development

Early childhood education plays a crucial role in the development of young children. Research has shown that the early years of a child's life are the most critical for brain development, and the experiences they have during this time can have a lasting impact on their future success. As teachers in the field of early childhood education, it is important for us to understand the significant role we play in shaping the development of young minds. One of the key ways that early childhood education impacts development is through the promotion of social and emotional skills. Children who participate in high-quality early childhood education programs are more likely to develop strong social skills, such as the ability to communicate effectively, resolve conflicts, and work cooperatively with others. These skills are essential for success in school and later in life, and can help children build positive relationships with peers and adults.





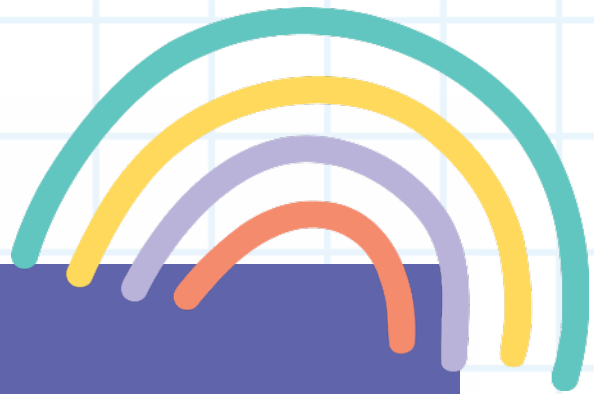
In addition to social and emotional skills, early childhood education also plays a crucial role in promoting cognitive development. Young children are like sponges, soaking up information from their environment at a rapid pace. By providing them with stimulating and engaging learning experiences, teachers can help children develop important cognitive skills, such as problem-solving, critical thinking, and language development. These skills are the building blocks for academic success and can help children thrive in school and beyond.

Furthermore, early childhood education can have a significant impact on a child's physical development. Through activities that promote gross and fine motor skills, such as running, jumping, and drawing, teachers can help children develop strength, coordination, and balance. These physical skills are not only important for overall health and well-being, but also for success in other areas of development, such as academic achievement and social interactions.

The ABCs of Early Childhood Education: A Comprehensive Guide for Teachers

In conclusion, the impact of early childhood education on development cannot be overstated. As teachers in the field of early childhood education, it is our responsibility to provide young children with the tools and experiences they need to thrive. By promoting social and emotional skills, cognitive development, and physical growth, we can help children reach their full potential and set them on a path to success in school and in life.





02

Chapter 2: Understanding Child Development

The Stages of Child Development

In the field of early childhood education, understanding the stages of child development is essential for teachers to effectively support their students' growth and learning. The stages of child development refer to the different milestones and abilities that children typically reach at different ages. By recognizing and acknowledging these stages, teachers can tailor their teaching strategies to meet the needs of each individual child.

The first stage of child development is the infancy stage, which typically lasts from birth to around 18 months. During this stage, children are rapidly developing their physical abilities, such as crawling, walking, and grasping objects. They are also forming strong attachments to their caregivers and beginning to communicate through babbling and gestures. Infants rely on their caregivers for basic needs such as feeding, changing, and comfort, and teachers play a crucial role in providing a nurturing and supportive environment for infants to thrive.





The next stage of child development is the toddler stage, which typically lasts from 18 months to around 3 years old. Toddlers are exploring their world and asserting their independence by testing boundaries and engaging in parallel play with their peers. They are developing their language skills and beginning to understand basic concepts such as colors, shapes, and numbers. Teachers can support toddlers' development by providing opportunities for hands-on exploration, encouraging social interactions, and promoting language development through songs, stories, and conversations.

The preschool stage follows the toddler stage and typically lasts from 3 to 5 years old. Preschoolers are developing more advanced cognitive skills, such as problem-solving, reasoning, and memory. They are also refining their social skills by learning to take turns, share, and cooperate with others. Preschoolers are curious and eager to learn, so teachers can engage them in a variety of activities that stimulate their creativity, imagination, and critical thinking skills. Providing a structured and nurturing environment is important for preschoolers to feel safe and supported as they continue to grow and learn.

The final stage of child development is the early school-age stage, which typically lasts from 5 to 8 years old. Children in this stage are transitioning from preschool to elementary school and are developing more complex social and academic skills. They are learning to read, write, and do basic math, as well as navigate social interactions with their peers. Teachers can support early school-age children by providing a balance of academic instruction, social-emotional support, and opportunities for physical activity and creative expression. By understanding the stages of child development and tailoring their teaching strategies to meet the needs of each individual child, teachers can create a supportive and enriching learning environment for all students in the early childhood education setting.

Factors Affecting Child Development

Child development is a complex and dynamic process that is influenced by a variety of factors. As teachers in the field of Early Childhood Education, it is important for us to understand these factors in order to support the healthy growth and development of the children in our care. There are several key factors that can impact a child's development, including genetics, environment, and relationships.

Genetics play a significant role in child development, as they determine a child's physical characteristics, temperament, and even certain predispositions to certain health conditions. While we cannot change a child's genetic makeup, we can create an environment that supports their unique needs and abilities. By understanding a child's genetic background, we can tailor our teaching strategies to meet their individual needs and help them reach their full potential.

The environment in which a child grows and develops also plays a crucial role in their overall development. This includes both the physical environment, such as their home and school, as well as the social environment, including their relationships with family members, peers, and teachers. A safe, nurturing, and stimulating environment can promote healthy brain development, language skills, and social-emotional growth. As teachers, it is our responsibility to create a positive and supportive environment that fosters the healthy development of all children in our care.

Relationships are another important factor that can influence a child's development. Positive, secure attachments with caregivers and teachers can help children feel safe, loved, and supported, which in turn can promote healthy social and emotional development. Strong relationships with peers can also help children develop important social skills, such as communication, cooperation, and empathy. By building strong relationships with the children in our care, we can create a sense of trust and security that is essential for their overall development.

In conclusion, there are many factors that can affect a child's development, including genetics, environment, and relationships. As teachers in the field of Early Childhood Education, it is essential for us to understand these factors and their impact on child development. By creating a nurturing environment, building strong relationships, and tailoring our teaching strategies to meet the individual needs of each child, we can support their healthy growth and development and help them reach their full potential.

Promoting Healthy Development in Early Childhood

Promoting healthy development in early childhood is crucial for setting the foundation for lifelong success. As teachers in the field of Early Childhood Education, it is our responsibility to create an environment that supports the physical, emotional, social, and cognitive development of young children. By implementing evidence-based practices and providing meaningful learning experiences, we can help children reach their full potential.

One key aspect of promoting healthy development in early childhood is ensuring that children have access to nutritious food and opportunities for physical activity. As teachers, we can play a vital role in teaching children about the importance of healthy eating habits and the benefits of staying active. By incorporating lessons on nutrition and providing opportunities for movement and play, we can help children develop lifelong habits that will support their overall well-being.

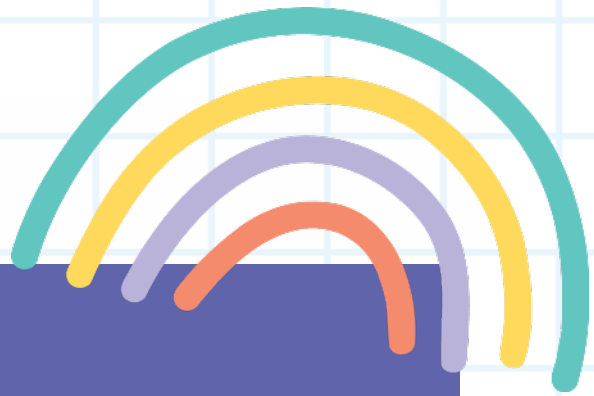
In addition to physical health, it is important to prioritize children's emotional well-being. Creating a safe and supportive classroom environment where children feel valued and respected is essential for promoting healthy emotional development. By modeling positive social interactions and teaching children how to express their emotions in a healthy way, we can help them build strong relationships and develop important social skills.



Cognitive development is another key component of healthy development in early childhood. As teachers, we can support children's cognitive growth by providing a rich and stimulating learning environment that encourages exploration, creativity, and problem-solving. By incorporating hands-on activities, interactive games, and open-ended questions into our lessons, we can help children develop critical thinking skills and a love for learning.

In conclusion, promoting healthy development in early childhood is a multifaceted task that requires a holistic approach. By focusing on physical health, emotional well-being, social skills, and cognitive development, we can create a nurturing and supportive environment that sets children up for success in school and in life. As teachers in the field of Early Childhood Education, it is our privilege and responsibility to help young children grow and thrive in every aspect of their development.





03

Chapter 3: Creating a Positive Learning Environment



Setting Up the Classroom

Setting up the classroom is an essential aspect of creating a welcoming and conducive learning environment for young children in early childhood education. As teachers, it is important to consider the layout, organization, and materials within the classroom to support the diverse needs and interests of all students. By carefully planning and designing the physical space, teachers can promote engagement, collaboration, and independence among their students.

When setting up the classroom, it is important to consider the different areas within the space, such as reading corners, art centers, and sensory play areas. These areas should be clearly defined and easily accessible to students, allowing them to explore and engage in various activities independently. By providing a variety of materials and resources in each area, teachers can cater to the different learning styles and interests of their students, promoting creativity and exploration.

The ABCs of Early Childhood Education: A Comprehensive Guide for Teachers

In addition to the physical layout of the classroom, teachers should also consider the organization of materials and supplies. It is important to have designated storage spaces for books, art supplies, toys, and other materials to ensure that the classroom remains organized and clutter-free. By implementing systems for labeling, sorting, and storing materials, teachers can promote independence and responsibility among their students, teaching them valuable skills for organization and time management.

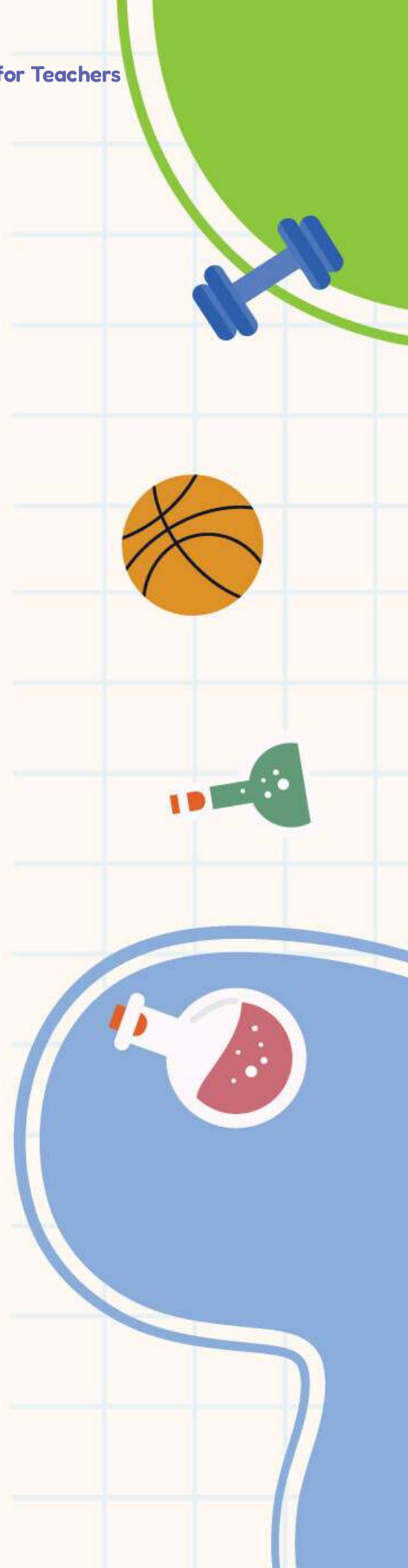
Furthermore, when setting up the classroom, teachers should consider the use of visual aids and displays to create a stimulating and engaging environment for students. Displaying student artwork, educational posters, and charts can help to reinforce concepts and provide visual cues for learning. Additionally, creating a print-rich environment with labels, signs, and word walls can support early literacy development and language acquisition among young children.

Overall, setting up the classroom is a critical component of creating a positive and inclusive learning environment for young children in early childhood education. By carefully planning the layout, organization, and materials within the classroom, teachers can support the diverse needs and interests of all students, promote independence and responsibility, and create a stimulating and engaging space for learning and exploration. Through thoughtful design and implementation, teachers can set the stage for a successful and enriching educational experience for their students.



Establishing Rules and Routines

Establishing Rules and Routines is an essential component of creating a positive and structured learning environment in early childhood education settings. Teachers play a crucial role in setting clear expectations and boundaries for their students, which helps to establish a sense of safety and predictability in the classroom. By implementing consistent rules and routines, teachers can promote a sense of order and organization that is essential for young children's development.





One key aspect of establishing rules and routines is setting clear and age-appropriate expectations for behavior. It is important for teachers to communicate these expectations to their students in a positive and respectful manner, emphasizing the importance of following rules and treating others with kindness and respect. By modeling appropriate behavior and providing positive reinforcement for students who demonstrate good behavior, teachers can help create a positive and supportive classroom environment. Consistency is another important factor in establishing rules and routines. Teachers should be consistent in enforcing rules and consequences, as inconsistency can lead to confusion and frustration among students. By consistently reinforcing expectations and providing clear consequences for misbehavior, teachers can help students understand the importance of following rules and taking responsibility for their actions.

In addition to setting rules and expectations for behavior, teachers should also establish routines for daily activities and transitions. Routines help young children feel secure and confident in their surroundings, as they know what to expect and what is expected of them. By establishing consistent routines for activities such as arrival and dismissal, transitions between activities, and daily schedules, teachers can help create a sense of stability and predictability for their students.

Overall, establishing rules and routines is a critical aspect of creating a positive and effective learning environment in early childhood education settings. By setting clear expectations for behavior, being consistent in enforcing rules and consequences, and establishing routines for daily activities, teachers can help promote a sense of safety, organization, and structure that is essential for young children's development. Through these practices, teachers can create a supportive and nurturing environment where students can thrive and reach their full potential.

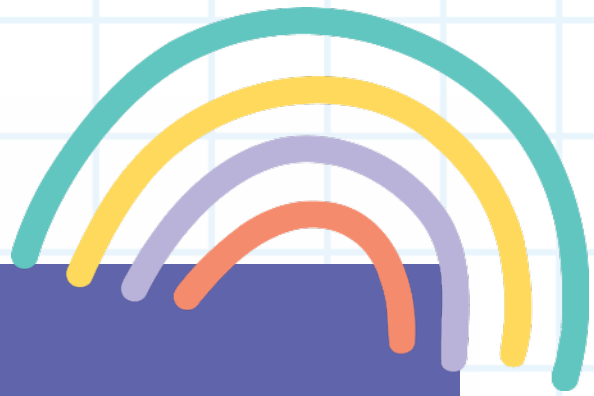
Incorporating Play-Based Learning

Incorporating play-based learning is essential in early childhood education as it allows children to engage in meaningful and hands-on experiences that promote cognitive, social, emotional, and physical development. Play-based learning is a child-centered approach that encourages exploration, creativity, and problem-solving skills. By incorporating play into the curriculum, teachers can create a dynamic and interactive learning environment that caters to the diverse needs and interests of young learners.

One of the key benefits of play-based learning is that it promotes active engagement and participation. Children learn best when they are actively involved in the learning process, and play provides the perfect opportunity for them to do so. Through play, children can explore new concepts, experiment with different materials, and collaborate with their peers. This hands-on approach to learning helps children develop critical thinking skills, problem-solving abilities, and a love for learning.

Another advantage of play-based learning is that it promotes social and emotional development. Play allows children to interact with their peers, practice social skills, and develop empathy and communication skills. Through play, children learn how to negotiate, cooperate, and resolve conflicts, which are essential skills for success both in school and in life. By encouraging children to engage in imaginative play, teachers can help them develop a sense of self-awareness, empathy, and emotional regulation. Incorporating play-based learning into the curriculum also helps children develop fine and gross motor skills. By engaging in physical play activities such as running, jumping, climbing, and building, children can strengthen their muscles, improve coordination, and enhance their overall physical development. Play-based learning provides children with the opportunity to move their bodies, explore their environment, and develop their sensory-motor skills in a fun and engaging way.

Overall, incorporating play-based learning into early childhood education is essential for creating a holistic and child-centered learning environment. By providing children with opportunities to play, explore, and learn through hands-on experiences, teachers can support their cognitive, social, emotional, and physical development. Play-based learning helps children develop essential skills such as critical thinking, problem-solving, social interaction, and physical coordination, setting a strong foundation for lifelong learning and success.



04

Chapter 4: Curriculum and Lesson Planning

Designing an Effective Curriculum

Designing an effective curriculum is essential for teachers in the field of Early Childhood Education. A well-thought-out curriculum provides a framework for teaching and learning that guides both teachers and students throughout the school year. In order to create an effective curriculum, teachers must consider the developmental needs and interests of young children, as well as the goals and objectives of their educational program.

One key aspect of designing an effective curriculum is identifying the learning goals and objectives that you want to achieve. These goals should be aligned with the standards and expectations set by your school or district, as well as the developmental needs of the children in your classroom. By clearly defining these goals, you can ensure that your curriculum is focused and purposeful, and that it will help your students make progress in their learning.



Another important consideration when designing a curriculum is selecting appropriate instructional strategies and materials. Teachers should choose activities and resources that are engaging, developmentally appropriate, and aligned with their learning goals. By using a variety of teaching methods and materials, teachers can cater to the diverse learning styles and needs of their students, and create a rich and stimulating learning environment.

In addition to setting goals and selecting instructional strategies, teachers should also consider how they will assess and evaluate student progress. Assessment is an integral part of the curriculum design process, as it allows teachers to monitor student learning, identify areas of strength and weakness, and make adjustments to their teaching as needed.



By incorporating both formative and summative assessments into their curriculum, teachers can ensure that they are meeting their learning goals and helping their students succeed. In conclusion, designing an effective curriculum is a complex and important task for teachers in Early Childhood Education. By setting clear learning goals, selecting appropriate instructional strategies and materials, and incorporating assessment into their curriculum, teachers can create a framework for teaching and learning that is engaging, developmentally appropriate, and effective. Through thoughtful curriculum design, teachers can help their students make meaningful progress in their learning and reach their full potential.

Planning Engaging Lessons

Planning engaging lessons is a crucial aspect of being an effective early childhood educator. Engaging lessons are not only more enjoyable for students, but they also promote better learning outcomes and retention. In this subchapter, we will discuss some strategies for planning and implementing engaging lessons in the early childhood classroom.



One key factor in planning engaging lessons is to consider the interests and developmental levels of your students. By taking the time to get to know your students and their individual needs, you can tailor your lessons to be more engaging and relevant to them. This might involve incorporating their favorite topics or activities into your lesson plans, or adapting the content to be more accessible to students at different levels of development. Another important aspect of planning engaging lessons is to make them hands-on and interactive. Young children learn best through play and exploration, so incorporating hands-on activities and opportunities for movement can help keep them engaged and excited about learning. This might involve setting up learning centers, using manipulatives, or incorporating games and group activities into your lessons.

The ABCs of Early Childhood Education: A Comprehensive Guide for Teachers

In addition to being hands-on, engaging lessons should also be relevant and meaningful to students. By connecting the content to real-world experiences and allowing students to see the relevance of what they are learning, you can help them stay engaged and motivated. This might involve using examples that are familiar to students, inviting guest speakers or taking field trips, or incorporating technology and multimedia resources into your lessons.

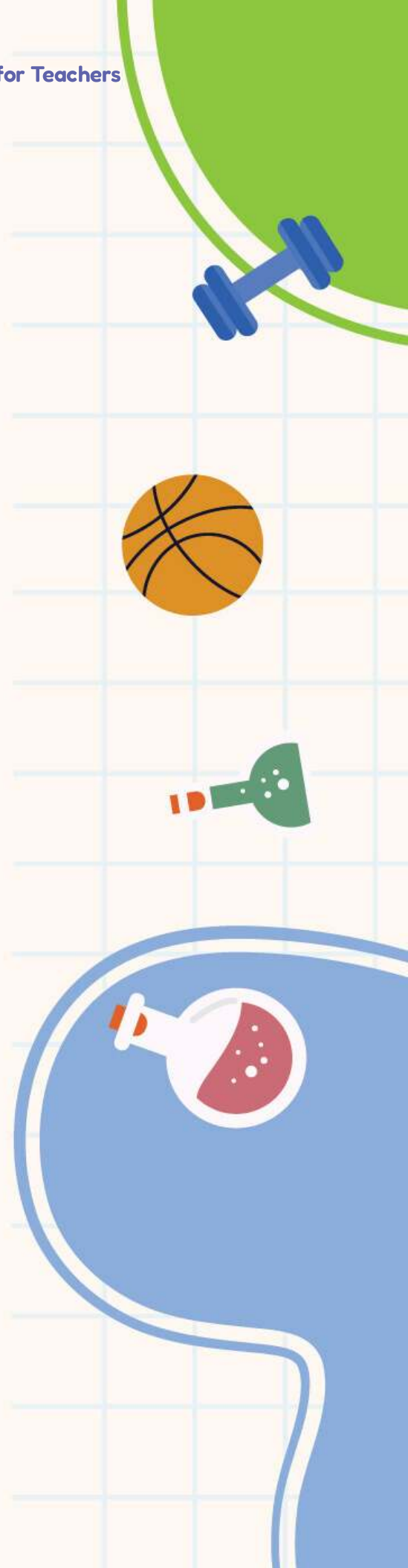
Furthermore, incorporating opportunities for student choice and autonomy can help make lessons more engaging. Allowing students to have some control over their learning, such as choosing which activities to work on or how to demonstrate their understanding, can help them feel more invested in the lesson and motivated to participate. This might involve offering choice boards, allowing students to work in groups or independently, or providing options for how to complete assignments.

Overall, planning engaging lessons in the early childhood classroom requires a combination of creativity, flexibility, and a deep understanding of your students' needs and interests. By incorporating hands-on activities, making lessons relevant and meaningful, and providing opportunities for student choice and autonomy, you can create a learning environment that is engaging, motivating, and conducive to student success.



Differentiated Instruction in Early Childhood Education

Differentiated instruction is a crucial aspect of early childhood education that aims to meet the diverse needs of each child in the classroom. By tailoring instruction to individual learning styles, abilities, and interests, teachers can create a more inclusive and effective learning environment for all students. In this subchapter, we will explore the principles and benefits of differentiated instruction in early childhood education, as well as provide practical strategies for implementing this approach in the classroom.





One of the key principles of differentiated instruction is the recognition that children learn in different ways and at different paces. By acknowledging and embracing these differences, teachers can create a more personalized learning experience for each child. This can involve varying the content, process, and product of instruction to accommodate the needs of diverse learners. For example, some students may benefit from visual aids or hands-on activities, while others may excel with auditory instruction or written assignments.

The benefits of differentiated instruction in early childhood education are numerous. By catering to the individual needs of each student, teachers can foster a more positive and engaging learning environment. This can lead to increased motivation, self-esteem, and academic success among students. Additionally, differentiated instruction promotes a sense of inclusivity and acceptance in the classroom, as students feel valued and supported for their unique abilities and learning styles.

There are several strategies that teachers can use to implement differentiated instruction in the early childhood classroom. One approach is to use flexible grouping, where students are grouped based on their learning needs and abilities. This allows teachers to provide targeted instruction to each group, while also promoting collaboration and peer support among students. Another strategy is to provide choice in assignments and activities, allowing students to choose tasks that align with their interests and strengths.

Overall, differentiated instruction is a powerful tool for promoting student success and inclusivity in the early childhood classroom. By recognizing and accommodating the diverse needs of each child, teachers can create a more personalized and effective learning experience for all students. By implementing the principles and strategies outlined in this subchapter, teachers can help every child reach their full potential and thrive in the classroom.



05

Chapter 5: Assessing and Monitoring Student Progress

Methods of Assessment in Early Childhood Education

As teachers in the field of Early Childhood Education, it is essential to understand the various methods of assessment that can be used to evaluate the progress and development of young children. Assessment in early childhood education plays a crucial role in providing valuable insights into a child's learning and growth, as well as informing instructional decisions and planning for individualized support.

One of the most commonly used methods of assessment in early childhood education is observation. Observing children in various settings and activities allows teachers to gather information about their strengths, interests, and areas for growth. By carefully documenting observations, teachers can track progress over time and identify patterns in a child's behavior and learning. Another important method of assessment in early childhood education is the use of developmental screenings and assessments. These tools help teachers to identify developmental delays or concerns early on, allowing for timely intervention and support. Developmental screenings and assessments can provide valuable information about a child's physical, cognitive, social, and emotional development, helping teachers to tailor their instruction to meet the unique needs of each child.

In addition to observation and developmental screenings, teachers in early childhood education can also use standardized assessments to measure a child's academic progress and school readiness. While standardized assessments have their limitations, they can provide valuable data about a child's knowledge and skills in comparison to national norms. It is important for teachers to use standardized assessments in conjunction with other methods of assessment to gain a comprehensive understanding of a child's abilities and needs.

Overall, the methods of assessment in early childhood education should be varied and comprehensive, taking into account the individual needs and strengths of each child. By using a combination of observation, developmental screenings, and standardized assessments, teachers can gather valuable information about a child's development and learning, and make informed decisions to support their growth and success in the classroom.

Tracking Student Development

Tracking student development is an essential component of effective teaching in early childhood education. By monitoring and assessing the progress of each child, teachers can tailor their instruction to meet the individual needs of students and ensure that they are reaching their full potential. There are several strategies that teachers can use to track student development, including observation, assessment tools, and parent communication.

One of the most important ways to track student development is through regular observation. By observing students in various settings, teachers can gain valuable insights into their strengths, weaknesses, and areas of growth. This allows teachers to identify patterns and trends in student behavior and adjust their teaching strategies accordingly. Observation also provides teachers with the opportunity to document student progress over time and share this information with parents and other stakeholders.

In addition to observation, teachers can use a variety of assessment tools to track student development. These tools may include standardized tests, informal assessments, and developmental checklists. By using a combination of assessment methods, teachers can gain a more comprehensive understanding of each child's abilities and progress. It is important for teachers to use assessment data to inform their instructional practices and provide targeted support to students who may be struggling.

Another important aspect of tracking student development is communication with parents. By keeping parents informed about their child's progress, teachers can create a strong partnership that supports student learning and development. Regular communication can help parents understand their child's strengths and areas for growth, as well as provide valuable insights into how they can support their child's learning at home.

Overall, tracking student development is a crucial aspect of effective teaching in early childhood education. By using a combination of observation, assessment tools, and parent communication, teachers can gain valuable insights into each child's progress and tailor their instruction to meet their individual needs. By tracking student development, teachers can ensure that all students have the opportunity to reach their full potential and succeed in school and beyond.



Using Assessment Data to Inform Instruction

Assessment data is a vital tool for educators in the field of Early Childhood Education. By gathering information on students' abilities, progress, and areas of need, teachers can make informed decisions about how to best support each child's learning journey. In this subchapter, we will explore the importance of using assessment data to inform instruction and discuss practical strategies for incorporating this data into your teaching practice. One key benefit of using assessment data to inform instruction is the ability to tailor your teaching approach to meet the individual needs of each student. By analyzing assessment results, teachers can identify areas where students may be struggling and design targeted interventions to help them succeed. For example, if a child is having difficulty with letter recognition, a teacher can use assessment data to create personalized activities and instruction to support their development in this area.





Additionally, assessment data can help teachers track student progress over time and make adjustments to instruction as needed. By regularly assessing students' skills and knowledge, educators can identify patterns of growth or areas of stagnation and adapt their teaching strategies accordingly. For example, if a student consistently performs well on assessments related to math but struggles with reading comprehension, a teacher can adjust their lesson plans to provide more support in that specific area.

Using assessment data to inform instruction also allows teachers to set realistic goals for their students and monitor their progress toward achieving those goals. By establishing clear learning objectives based on assessment data, educators can create a roadmap for student success and track their development over time. This approach can help teachers identify areas where students may need additional support or enrichment and provide targeted instruction to help them reach their full potential.

The ABCs of Early Childhood Education: A Comprehensive Guide for Teachers

In conclusion, the use of assessment data to inform instruction is a valuable practice for educators in the field of Early Childhood Education. By analyzing assessment results, tailoring instruction to meet individual student needs, tracking progress over time, and setting realistic goals, teachers can create a supportive learning environment that promotes student growth and achievement. By incorporating assessment data into your teaching practice, you can ensure that each child receives the personalized support they need to thrive in the classroom.





06

Chapter 6: Working with Families and Communities

Building Relationships with Families

Building relationships with families is a crucial aspect of early childhood education that cannot be overlooked. Teachers play a vital role in creating a strong partnership with families to support the development and learning of young children. By working together, teachers and families can ensure that children receive the best possible care and education.

One of the first steps in building relationships with families is to establish open and effective communication. Teachers should make an effort to communicate regularly with families, providing updates on their child's progress and any concerns that may arise. This can be done through emails, phone calls, parent-teacher conferences, or even a simple note sent home with the child. By keeping the lines of communication open, teachers can build trust and collaboration with families.





Another important aspect of building relationships with families is to involve them in their child's learning experiences. Teachers can invite families to participate in classroom activities, field trips, or special events. This not only helps families feel connected to their child's education but also allows them to see firsthand the progress their child is making. Involving families in the learning process can also help teachers gain valuable insights into their child's strengths, interests, and areas for improvement.

Creating a welcoming and inclusive environment for families is also essential in building strong relationships. Teachers should strive to make families feel comfortable and valued when they visit the classroom. This can be achieved by displaying family photos, providing resources in multiple languages, or hosting family events and workshops. By creating a sense of belonging for families, teachers can foster a supportive and collaborative partnership. Overall, building relationships with families is a collaborative effort that requires time, effort, and dedication from both teachers and families. By establishing open communication, involving families in their child's learning, and creating a welcoming environment, teachers can create a strong partnership that supports the holistic development of young children. Together, teachers and families can work towards providing the best possible care and education for the children in their care.

Engaging Families in the Learning Process

Engaging Families in the Learning Process is a crucial aspect of early childhood education. Teachers play a vital role in fostering a strong partnership with families to support the development and learning of young children. By involving families in the learning process, educators can create a more holistic and supportive environment for children to thrive.

One way to engage families in the learning process is to establish open lines of communication. Teachers should communicate regularly with parents about their child's progress, achievements, and challenges. This can be done through daily conversations, written notes, emails, or parent-teacher conferences. By keeping families informed and involved, parents can better support their child's learning at home.

Another effective way to engage families in the learning process is to involve them in classroom activities and events. Teachers can invite parents to volunteer in the classroom, participate in special events, or join in on field trips. By including families in these activities, parents can see firsthand the learning experiences their child is having and feel more connected to the school community.

Furthermore, teachers can provide families with resources and strategies to support their child's learning at home. This may include suggesting educational games, books, or activities that families can do together. By empowering parents with the tools and knowledge to support their child's learning, educators can strengthen the partnership between home and school. In conclusion, engaging families in the learning process is essential for the success of young children in early childhood education. By establishing open communication, involving families in classroom activities, and providing resources and strategies for learning at home, teachers can create a supportive and collaborative environment for children to grow and thrive. Working together with families, educators can ensure that every child receives the support and guidance they need to reach their full potential.

Collaborating with Community Resources

Collaborating with community resources is an essential aspect of early childhood education. By working with local organizations, businesses, and community members, teachers can provide their students with a more enriching and holistic learning experience. These partnerships can help teachers access resources and expertise that they may not have within their own classrooms, allowing them to better meet the diverse needs of their students.

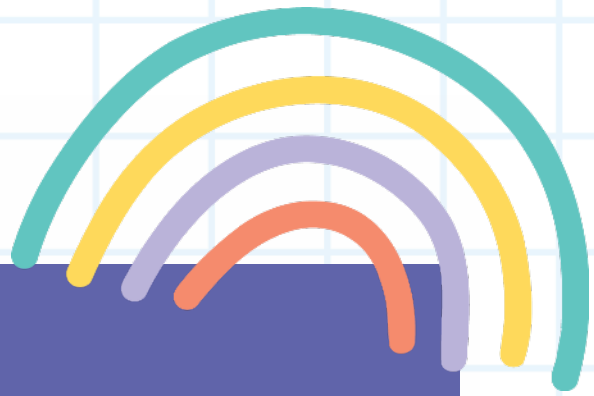
One way that teachers can collaborate with community resources is by inviting guest speakers into the classroom. These experts can provide valuable insights and knowledge on a variety of topics, from health and nutrition to science and the arts. By exposing young children to a wide range of perspectives and experiences, teachers can help broaden their horizons and inspire them to pursue their interests and passions.

Community resources can also provide teachers with valuable materials and supplies that can enhance their lessons and activities. Local businesses, for example, may be willing to donate art supplies, books, or other materials that can be used in the classroom. By tapping into these resources, teachers can stretch their budgets and provide their students with high-quality learning materials that they may not have been able to afford otherwise.

Furthermore, collaborating with community resources can help teachers build strong relationships with families and caregivers. By partnering with local organizations that support families, teachers can better understand the needs and challenges facing their students outside of the classroom. This can help teachers provide more personalized support to their students and create a more inclusive and supportive learning environment.



Overall, collaborating with community resources is a win-win for teachers, students, and the community at large. By working together, teachers can provide their students with a more well-rounded education, access valuable resources and expertise, and build stronger relationships with families and caregivers. Through these partnerships, teachers can help ensure that every child has the opportunity to reach their full potential and thrive in the early childhood education setting.



07

Chapter 7: Supporting Children with Diverse Needs

Inclusive Practices in Early Childhood Education



Inclusive practices in early childhood education are essential for creating a supportive and nurturing environment for all students. Inclusion means that every child, regardless of ability or background, has the right to participate fully in all aspects of the learning process. As teachers, it is our responsibility to ensure that every child feels valued and included in the classroom.

One way to promote inclusivity in early childhood education is by implementing a variety of teaching strategies that cater to the diverse needs of students. This may include incorporating visual aids, hands-on activities, and group work to accommodate different learning styles and abilities. By providing a range of learning opportunities, we can ensure that all students have the chance to succeed and thrive in the classroom. Another important aspect of inclusive practices in early childhood education is creating a welcoming and accepting classroom environment. This means celebrating diversity and encouraging respect and understanding among students. By teaching children to appreciate and embrace differences, we can help foster a sense of belonging and unity in the classroom.



Inclusive practices also involve working closely with families and other professionals to support the individual needs of each child. By collaborating with parents, therapists, and other educators, we can develop personalized learning plans that address the specific strengths and challenges of each student. This team approach ensures that all children receive the necessary support and resources to reach their full potential.

Ultimately, inclusive practices in early childhood education benefit all students, not just those with special needs. By creating a supportive and inclusive learning environment, we promote empathy, respect, and acceptance among all students. As teachers, it is our duty to champion inclusivity and ensure that every child has the opportunity to learn and grow in a safe and inclusive classroom setting.

Differentiating Instruction for Diverse Learners

The ABCs of Early Childhood Education: A Comprehensive Guide for Teachers

In the field of early childhood education, it is important for teachers to recognize and accommodate the diverse learning needs of their students. Differentiating instruction is a key strategy that can help ensure that all children have the opportunity to succeed in the classroom. By tailoring lessons and activities to meet the individual needs of each student, teachers can create a learning environment that is inclusive and supportive for all.

One of the first steps in differentiating instruction for diverse learners is to assess the needs of each student. This may involve conducting informal assessments, observing students in the classroom, and collecting information from parents or other caregivers. By understanding the strengths and weaknesses of each student, teachers can better tailor their instruction to meet the individual needs of each child.

Another important aspect of differentiating instruction is providing multiple ways for students to demonstrate their understanding of the material. For example, some students may excel at written assignments, while others may prefer hands-on activities or group projects. By offering a variety of assessment options, teachers can ensure that all students have the opportunity to showcase their knowledge and skills in a way that is comfortable and accessible for them.



In addition to providing different ways for students to demonstrate their understanding, teachers can also differentiate instruction by adjusting the pace and complexity of lessons. Some students may need additional support or scaffolding to grasp a concept, while others may benefit from more challenging material. By tailoring the pace and difficulty of instruction to meet the needs of each student, teachers can help ensure that all children are engaged and making progress in their learning. Overall, differentiating instruction for diverse learners is essential in early childhood education. By recognizing and accommodating the unique needs of each student, teachers can create a learning environment that is inclusive, supportive, and effective for all children. Through thoughtful assessment, varied assessment methods, and tailored instruction, teachers can help ensure that every child has the opportunity to succeed in the classroom.





Addressing Behavioral Challenges in the Classroom

Addressing behavioral challenges in the classroom is a crucial aspect of early childhood education. As teachers, it is important to understand that young children are still developing their social and emotional skills, and may struggle to regulate their behavior at times. By implementing effective strategies and techniques, educators can create a positive and supportive learning environment for all students.

One key strategy for addressing behavioral challenges in the classroom is to establish clear and consistent expectations. By setting clear rules and consequences, students know what is expected of them and what will happen if they do not follow the rules. Consistency is key in enforcing these expectations, as it helps children understand the boundaries and feel secure in their environment.

Another important aspect of addressing behavioral challenges is to build positive relationships with students. When children feel connected to their teachers, they are more likely to listen and respond positively to guidance. Taking the time to get to know each student individually, showing empathy and understanding, and praising their efforts can help create a supportive and nurturing classroom environment.

It is also important for teachers to model positive behavior and provide students with appropriate ways to express their emotions. By demonstrating patience, kindness, and respect in their interactions with students, teachers can help children learn how to manage their own emotions and behaviors effectively. Teaching children problem-solving skills and conflict resolution techniques can also empower them to handle challenging situations in a constructive manner.

In conclusion, addressing behavioral challenges in the classroom requires a combination of clear expectations, positive relationships, modeling of positive behavior, and teaching of appropriate social and emotional skills. By implementing these strategies, teachers can create a supportive learning environment where all students can thrive and succeed. Remember, every child is unique, and it is important to approach behavioral challenges with empathy, understanding, and patience.



08

Chapter 8: Professional Development and Self-Care

Continuing Education Opportunities for Early Childhood Educators

As a teacher in the field of Early Childhood Education, it is crucial to stay up-to-date on the latest research, trends, and best practices in the field.

Continuing education opportunities provide valuable resources and support for educators to enhance their knowledge and skills. These opportunities can come in a variety of forms, including workshops, conferences, online courses, and professional development programs.

One of the most popular options for continuing education in Early Childhood Education is attending conferences and workshops. These events offer a chance to learn from experts in the field, network with other educators, and gain new ideas and strategies to use in the classroom. Many conferences also offer hands-on activities and resources that can be implemented immediately in the classroom.

Online courses and webinars are another convenient option for educators looking to further their education. These courses can be completed at your own pace and on your own schedule, making them ideal for busy teachers. Online courses cover a wide range of topics, from child development to classroom management, and can help educators stay current on the latest research and trends in the field.

Professional development programs are another valuable resource for Early Childhood Educators. These programs often focus on specific areas of interest, such as literacy instruction or social-emotional development, and provide in-depth training and support for educators looking to deepen their knowledge in these areas. Many professional development programs also offer opportunities for educators to earn certifications or credentials in specialized areas of Early Childhood Education.

In conclusion, continuing education opportunities are essential for Early Childhood Educators looking to stay current in their field and provide the best possible education for their students. Whether through conferences, online courses, or professional development programs, educators have a wealth of resources available to support their ongoing learning and professional growth. By taking advantage of these opportunities, teachers can continue to improve their practice and make a positive impact on the lives of young children.

Taking Care of Yourself as a Teacher

As a teacher in the field of Early Childhood Education, it is essential to prioritize self-care in order to effectively support and nurture the young minds in your care. Taking care of yourself is not a luxury, but a necessity in order to avoid burnout and provide the best possible learning environment for your students. In this subchapter, we will explore some practical strategies for self-care that can help you maintain your well-being and thrive in your role as an educator.

One important aspect of self-care for teachers is setting boundaries. It can be easy to take on too much and neglect your own needs when you are constantly focused on caring for others. By setting clear boundaries around your time, energy, and emotional well-being, you can ensure that you have the resources to give your best to your students without sacrificing your own well-being.

Another key component of self-care for teachers is prioritizing physical health. Teaching can be a physically demanding profession, and it is important to take care of your body in order to avoid burnout and stay energized throughout the day. Make time for regular exercise, healthy meals, and adequate sleep to ensure that you have the stamina and resilience to meet the demands of your job.

In addition to physical health, mental and emotional well-being are also crucial aspects of self-care for teachers. It is important to prioritize activities that help you relax, recharge, and maintain a positive mindset. Whether it's practicing mindfulness, engaging in hobbies you enjoy, or seeking support from a therapist or counselor, taking care of your mental and emotional health is essential for staying resilient in the face of the challenges of teaching.



Finally, self-care for teachers also includes seeking support and connection with others. Teaching can be a isolating profession, but having a strong support system of colleagues, friends, and mentors can help you navigate the ups and downs of the job with greater ease. Don't be afraid to reach out for help when you need it, and make time to connect with others who understand the unique challenges and joys of teaching in Early Childhood Education.

By prioritizing self-care and seeking support when needed, you can ensure that you are able to continue making a positive impact on the lives of young children for years to come.

Balancing Work and Personal Life



Balancing work and personal life is a challenge that many teachers in the field of early childhood education face on a daily basis. The demands of the job can be overwhelming at times, with long hours spent planning lessons, engaging with students, and attending meetings. However, it is essential for teachers to find a balance between their work responsibilities and personal life in order to avoid burnout and maintain a healthy lifestyle.

One way to achieve a better balance between work and personal life is to establish boundaries and set aside time for self-care. This may involve setting limits on how much time you spend working outside of school hours, prioritizing activities that bring you joy and relaxation, and making time for exercise, hobbies, and socializing with friends and family. By taking care of yourself, you will be better equipped to handle the demands of your job and be more present for your students.



Another important aspect of balancing work and personal life is learning to delegate tasks and ask for help when needed. As a teacher, it can be easy to fall into the trap of trying to do everything yourself, but this can lead to feelings of overwhelm and exhaustion. By delegating tasks to colleagues, parents, or volunteers, you can free up time for yourself and ensure that you are not taking on too much responsibility.

It is also important for teachers to prioritize their mental and emotional well-being in order to maintain a healthy work-life balance. This may involve seeking support from a counselor or therapist, practicing mindfulness and relaxation techniques, or engaging in activities that help you manage stress and anxiety. By taking care of your mental health, you will be better able to handle the challenges of teaching and maintain a positive outlook on your work and personal life.

The ABCs of Early Childhood Education: A Comprehensive Guide for Teachers

In conclusion, finding a balance between work and personal life as a teacher in early childhood education is crucial for maintaining your well-being and effectiveness in the classroom. By setting boundaries, delegating tasks, prioritizing self-care, and prioritizing mental health, you can create a healthier and more sustainable work-life balance. Remember that taking care of yourself is not selfish – it is essential for being the best teacher you can be for your students.



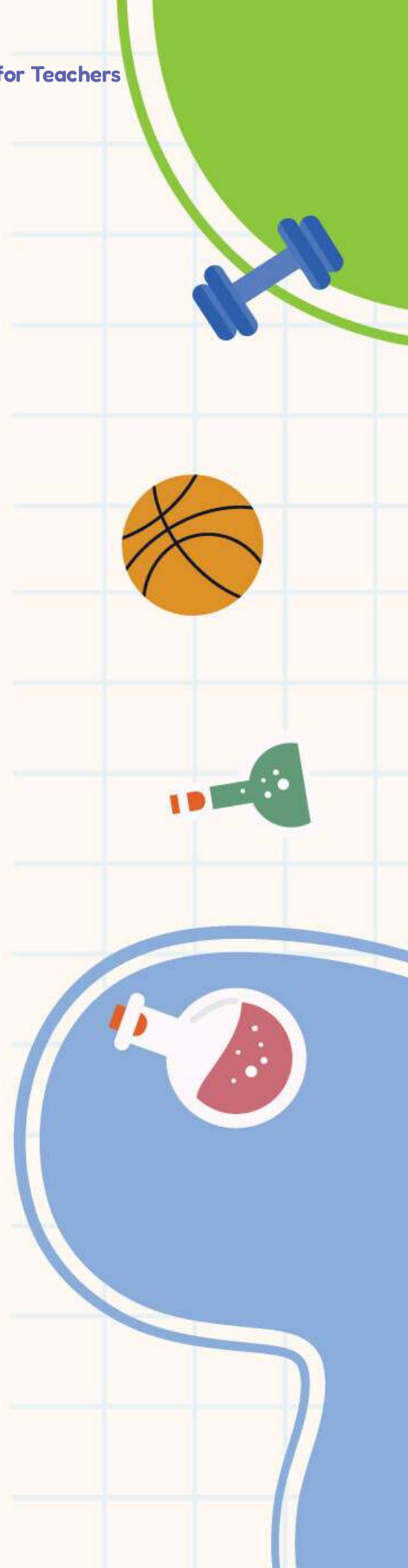


09

Chapter 9: Advocacy and Policy in Early Childhood Education

Advocating for Quality Early Childhood Education

Advocating for Quality Early Childhood Education is crucial for teachers in the field of Early Childhood Education. As educators, we have a responsibility to ensure that all young children have access to high-quality learning experiences that will set them up for success in school and in life. By advocating for quality early childhood education, we are not only advocating for the rights of young children, but we are also advocating for the future of our society as a whole.





One of the key ways that teachers can advocate for quality early childhood education is by staying informed about current research and best practices in the field. By keeping up-to-date on the latest developments in early childhood education, teachers can ensure that they are providing their students with the most effective and impactful learning experiences possible. This knowledge can also be used to advocate for policy changes at the state and national level that support high-quality early childhood education for all children.

In addition to staying informed, teachers can also advocate for quality early childhood education by speaking up for their students and their profession. This may involve participating in advocacy campaigns, writing letters to policymakers, or speaking at public hearings or events. By sharing their expertise and experiences, teachers can help to raise awareness about the importance of early childhood education and the difference it can make in the lives of young children.

Another important way that teachers can advocate for quality early childhood education is by collaborating with other educators, parents, and community members. By working together, we can pool our resources and expertise to create a stronger voice for early childhood education advocacy. By building partnerships and coalitions, teachers can amplify their message and make a greater impact on policy decisions that affect the field of early childhood education.

Overall, advocating for quality early childhood education is essential for teachers in the field of Early Childhood Education. By staying informed, speaking up, and collaborating with others, teachers can help to ensure that all young children have access to the high-quality learning experiences they need to thrive. By advocating for quality early childhood education, teachers can make a lasting impact on the lives of their students and on the future of our society.

Understanding Policies Affecting Early Childhood Education

In the world of early childhood education, understanding policies that affect the field is crucial for teachers as they navigate the complexities of their profession. These policies can have a significant impact on the way teachers approach their work, the resources available to them, and the overall quality of education provided to young children. In this subchapter, we will delve into the various policies that influence early childhood education and explore how teachers can work within these frameworks to create the best possible learning environment for their students.

One of the key policies that teachers need to be aware of is the Every Student Succeeds Act (ESSA), which was signed into law in 2015. This law replaced the No Child Left Behind Act and aims to provide more flexibility to states in how they assess students and hold schools accountable. For teachers in the early childhood education field, this means understanding how their students will be assessed and how their performance will be evaluated. By staying informed about ESSA and its implications, teachers can better prepare their students for success in the classroom.

Another important policy that impacts early childhood education is the Head Start program. Head Start is a federal program that provides comprehensive early childhood education, health, nutrition, and parent involvement services to low-income children and their families. Teachers working in Head Start programs must understand the guidelines and regulations set forth by the program in order to effectively support the needs of their students and families. By familiarizing themselves with Head Start policies, teachers can ensure that they are providing the best possible education and support to their students.

In addition to federal policies like ESSA and Head Start, teachers in the early childhood education field must also be aware of state and local policies that affect their work. These policies can vary widely from state to state and can impact everything from licensing requirements to funding for early childhood programs. By staying up-to-date on state and local policies, teachers can ensure that they are in compliance with all regulations and are able to access the resources they need to provide high-quality education to their students.

Overall, understanding policies that affect early childhood education is essential for teachers in the field. By staying informed about federal, state, and local policies, teachers can ensure that they are providing the best possible education to their students and are able to navigate the complexities of their profession with confidence. By working within these policy frameworks, teachers can continue to make a positive impact on the lives of young children and help them succeed in school and beyond.



Promoting Positive Change in the Field of Early Childhood Education

As teachers in the field of early childhood education, it is crucial for us to constantly strive towards promoting positive change in our practice. This not only benefits the children under our care, but also contributes to the overall development and improvement of the field as a whole. In this subchapter, we will explore some key strategies and approaches that can help us foster positive change in early childhood education.

One important way to promote positive change in the field of early childhood education is by staying informed and up-to-date on the latest research and best practices. By regularly attending workshops, conferences, and professional development opportunities, we can expand our knowledge and skill set, and implement new and innovative ideas in our classrooms. This commitment to lifelong learning not only benefits us as teachers, but also enriches the learning experiences of the children we teach.



Another key aspect of promoting positive change in early childhood education is by fostering a collaborative and supportive environment among colleagues. By working together, sharing ideas, and learning from each other's experiences, we can create a culture of continuous improvement and innovation in our practice. This collaborative approach not only benefits us as individual teachers, but also contributes to the overall growth and development of the field.

Additionally, promoting positive change in the field of early childhood education involves advocating for the needs and rights of children and families. As teachers, we have a unique opportunity to be a voice for those who may not have one, and to advocate for policies and practices that support the well-being and development of children. By speaking up and taking action on issues that matter, we can make a real difference in the lives of the children we teach and their families.

In conclusion, promoting positive change in the field of early childhood education is essential for the growth and development of both the field and the children we teach. By staying informed, fostering collaboration, and advocating for the needs of children and families, we can create a more inclusive, supportive, and innovative learning environment for all. As teachers, let us commit ourselves to being agents of change and champions for the well-being and success of the youngest members of our society.



10

Chapter 10: Conclusion and Resources



Reflecting on Your Practice as an Early Childhood Educator

Reflecting on your practice as an early childhood educator is an essential aspect of professional development. It allows you to assess your strengths and areas for growth, as well as to identify any challenges you may be facing in your teaching practice. By taking the time to reflect on your work, you can gain valuable insights that will help you improve as an educator and better meet the needs of your students.

One way to reflect on your practice is to keep a reflective journal. In this journal, you can record your thoughts and observations about your teaching practice, as well as any insights or ideas that come to you as you work with your students. By regularly reviewing and reflecting on your journal entries, you can gain a deeper understanding of your teaching practice and identify areas where you can make improvements.

The ABCs of Early Childhood Education: A Comprehensive Guide for Teachers

Another way to reflect on your practice is to seek feedback from colleagues, mentors, or supervisors. By sharing your teaching practice with others and inviting their feedback, you can gain valuable insights and perspectives that will help you grow as an educator. This feedback can also help you identify blind spots or areas where you may need additional support or professional development.

Reflecting on your practice can also involve taking time to observe and reflect on your students' learning and development. By closely observing your students and reflecting on their progress, you can gain valuable insights into the effectiveness of your teaching strategies and identify areas where you may need to make adjustments. This can help you tailor your teaching practice to better meet the needs of your students and support their learning and development. In conclusion, reflecting on your practice as an early childhood educator is a crucial aspect of professional growth and development. By taking the time to reflect on your teaching practice, seek feedback from others, and observe your students' learning and development, you can gain valuable insights that will help you improve as an educator and better meet the needs of your students. Remember that reflection is an ongoing process, and by making it a regular part of your practice, you can continue to grow and evolve as an early childhood educator.



Additional Resources for Teachers in Early Childhood Education

In the world of early childhood education, teachers often find themselves in need of additional resources to enhance their teaching practices and support the development of their young students. Whether it's finding new classroom activities, learning about the latest research in child development, or seeking guidance on how to address specific learning challenges, having access to a variety of resources is essential for teachers to be successful in their roles. One valuable resource for teachers in early childhood education is professional development opportunities. These can include workshops, conferences, webinars, and online courses that focus on a variety of topics related to early childhood education. By attending these events, teachers can stay up-to-date on the latest research and best practices in the field, as well as connect with other educators who share their passion for teaching young children.





Another useful resource for teachers is access to educational websites and online communities. Websites such as the National Association for the Education of Young Children (NAEYC) and Teaching Strategies offer a wealth of information and resources for early childhood educators. Online communities, such as social media groups and forums, provide a platform for teachers to connect with their peers, ask questions, and share ideas and resources.

Books and publications are also valuable resources for teachers in early childhood education. There are a wide variety of books available that cover topics such as child development, curriculum planning, classroom management, and special education. Subscribing to professional journals and magazines, such as *Early Childhood Research Quarterly* and *Young Children*, can also provide teachers with access to the latest research and trends in the field.

Lastly, mentorship and collaboration with other educators can be a powerful resource for teachers in early childhood education. By forming professional relationships with experienced teachers, new educators can gain valuable insights, advice, and support as they navigate their teaching careers. Collaborating with colleagues on lesson planning, curriculum development, and classroom management can also help teachers to improve their practices and provide the best possible education for their students. In conclusion, having access to a variety of resources is essential for teachers in early childhood education to enhance their teaching practices and support the development of their young students. By taking advantage of professional development opportunities, educational websites, books and publications, and mentorship and collaboration with other educators, teachers can continue to grow and evolve in their roles as educators. By investing in their own professional development and seeking out resources to support their teaching practices, teachers can provide the best possible education for the young children in their care.

About the Author

Dr. Matthew Lynch is a writer, activist and former Dean of the School of Education, Psychology, & Interdisciplinary Studies at Virginia Union University. Before his tenure at Virginia Union, Dr. Lynch was the chairman of the Department of Elementary/Special Education at Langston University and an Associate Professor of Education. Before that, he spent three years as an Assistant Professor of Education and Director of Secondary and Social Studies Programs at Widener University. Before that, Dr. Lynch spent seven years as a K-12 teacher – an experience that gave him an intimate view of the challenges facing genuine education reform.